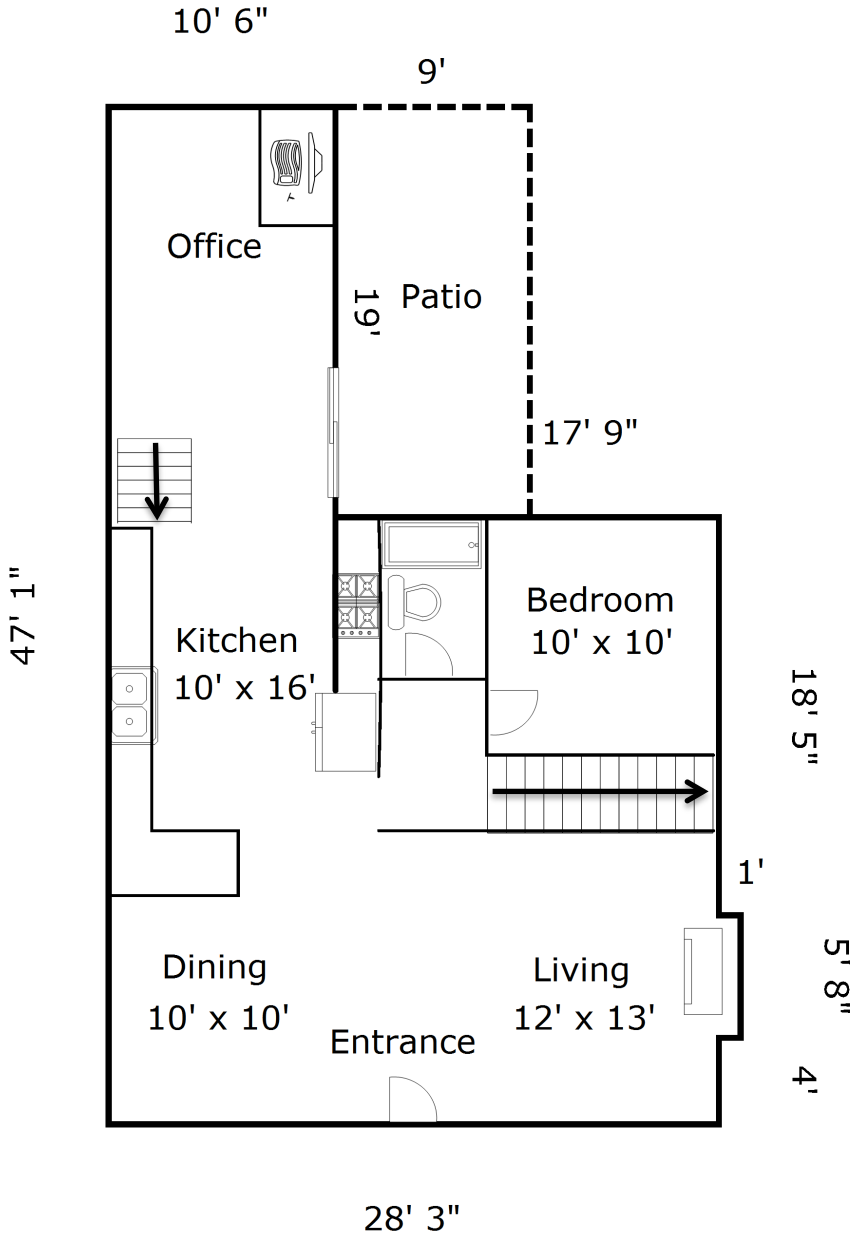


Floor Plans

4xxx Grand Avenue South, Minneapolis, MN

Main Floor



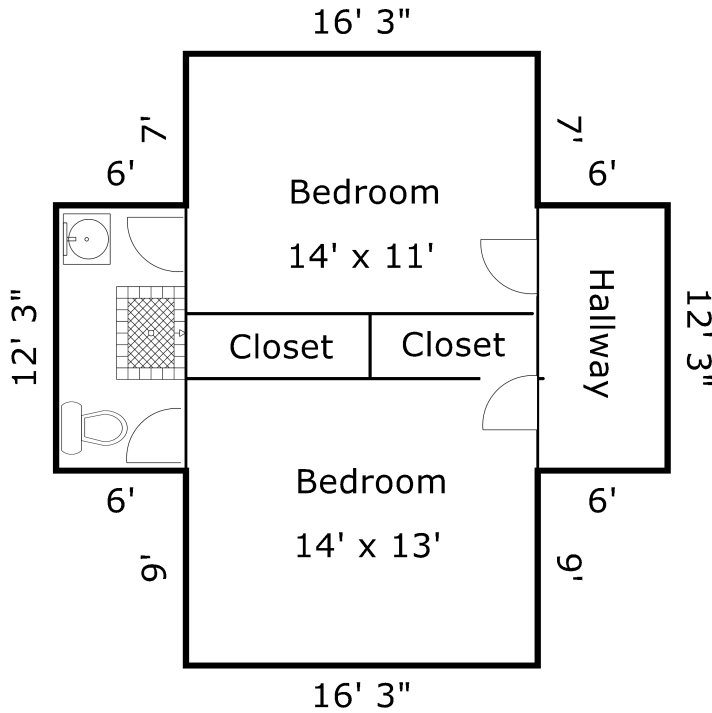
Room	Interior Dimensions
Bedroom	10' x 10'
Office	10' x 19'
Kitchen	10' x 16'
Dining	10' x 10'
Living Room	12' x 13'
Full Bath	5' x 6'
Patio	9' x 19'

Area	
Foundation Size	798 SF
Above Grade Finished SF	1605 SF
Below Grade Finished SF	659 SF
Total Finished SF	2,264 SF
Main Floor Finished SF	999 SF
Second Floor Finished SF	606 SF
Basement Finished SF	659 SF
Basement Unfinished SF	139 SF

Floor Plans

4xxx Grand Avenue South, Minneapolis, MN

Second Floor



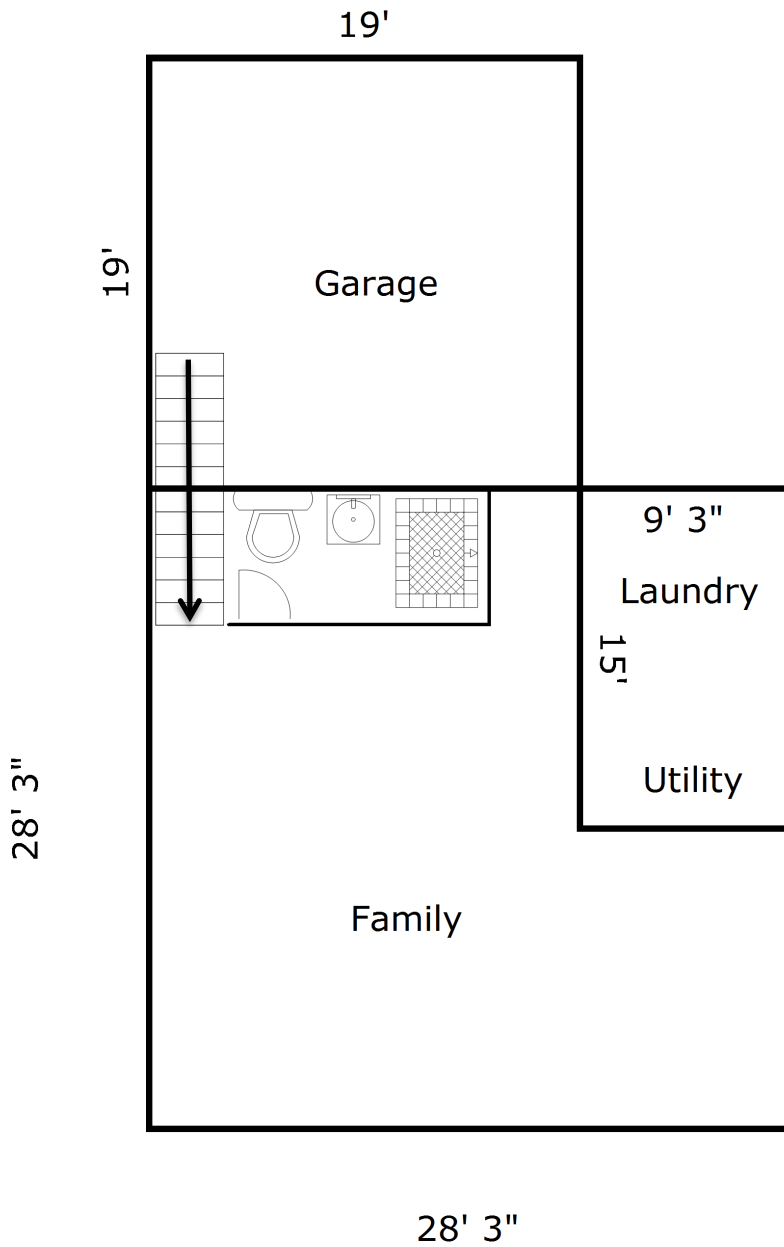
Room	Interior Dimensions
Bedroom	14' x 11'
Bedroom	14' x 13'
3/4 Bath	5' x 10'

Area	
Foundation Size	798 SF
Above Grade Finished SF	1605 SF
Below Grade Finished SF	659 SF
Total Finished SF	2,264 SF
Main Floor Finished SF	999 SF
Second Floor Finished SF	606 SF
Basement Finished SF	659 SF
Basement Unfinished SF	139 SF

Floor Plans

4xxx Grand Avenue South, Minneapolis, MN

Lower Level



Room	Interior Dimensions
Family Room	26' x 12', 17' x 10'
3/4 Bath	5' x 10'
Laundry/ Utility room	9' x 15'
Garage	19' x 19'

Area	
Foundation Size	798 SF
Above Grade Finished SF	1605 SF
Below Grade Finished SF	659 SF
Total Finished SF	2,264 SF
Main Floor Finished SF	999 SF
Second Floor Finished SF	606 SF
Basement Finished SF	659 SF
Basement Unfinished SF	139 SF